



ARTISON SPEAKERS

Powerful, high-performance audio
with elegant, unobtrusive style

SAVANT | ARTISON

savant.com

© 2021 Savant Systems, Inc. All rights reserved.

FLAWLESS ENTERTAINMENT, EXTRAORDINARY CONTROL

When paired with Savant audio solutions, Artison Speakers deliver premium entertainment with seamless control from the Savant Pro App.

PERFECTLY INTEGRATED

Artison speakers combine powerful, high-performance audio with an elegant, unobtrusive aesthetic. The result: a level of personal enjoyment and emotional connection you've not attained before, either at home or in a commercial office space.



DUAL CENTER SPEAKERS

SEAMLESS AUDIO ATTACHED TO THE DISPLAY

Proprietary carbon fiber woofers, Vifa XT Super Audio Tweeters, and sleek enclosures designed to be hidden in plain sight. Technological and artistic details blend to create not merely state-of-the-art sound quality but an emotional experience that is unforgettable.

Artison Dual Center Speakers feature patented center channel technology that delivers clear voices from the middle of the screen. The two enclosures contain four separate cabinets: two Centers, one Left and one Right, creating a clutter-free, three-channel home theater experience.



	Masterpiece	Portrait	Sketch
Sold As	Pair	Pair	Pair
Driver Complement	Four - 3.5" Carbon Fiber Midrange/Woofers Sixteen - 1" ART Drivers in Curved Line Array One - 1" Stage Tweeter	Four - 3.5" Carbon Fiber Midrange/Woofers Two - Vifa XT25 Super Audio Tweeters, 15° swivel mount One - 1" Stage Tweeter	Two - 3.5" Carbon Fiber Midrange/Woofers Two - 25mm Vifa DX Super Audio Tweeters One - 1" Stage Tweeter
Dimensions Without Grille	Height: 29.6" (75.1cm) Width: 6.2" (15.8 cm) Depth: 2.5" (6.3 cm)	Height: 25.3" (64.3 cm) Width: 6.2" (15.8 cm) Depth: 2.5" (6.3 cm)	Height: 25.3" (64.3 cm) Width: 6.2" (15.8 cm) Depth: 2.5" (6.3 cm)
Dimensions With Grille	Height: Custom Width: 6.5" (16.4 cm) Depth: 2.8" (7 cm)	Height: Custom Width: 6.5" (16.4 cm) Depth: 2.8" (7 cm)	Height: Custom Width: 6.5" (16.4 cm) Depth: 2.8" (7 cm)
Minimum Display Height	30" (76.2 cm)	25.7" (65.3 cm)	25.7" (65.3 cm)
Crossover	800 Hz	2.5 kHz	2.5 kHz
Frequency Response	80 Hz - 20 kHz ± 3 dB	80 Hz - 30 kHz ± 3 dB	Center: 80 Hz - 40 kHz ± 3 dB L/R: 100 Hz - 40 kHz ± 3dB
Recommended Power	100-250 Watts	100-200 Watts	Center: 75 - 150 Watts L/R: 50 - 100 Watts
Nominal Impedance	6 Ω	6 Ω	6 Ω
Sensitivity	89 db @ 2.83V, 1 Meter	89 db @ 2.83V, 1 Meter	87 db @ 2.83V, 1 Meter
System Weight	28 lbs	25 lbs	22 lbs
Accessories Available	<ul style="list-style-type: none"> • Custom size grilles match the size of the display, available in light grey & black. Grilles are sold separately. • Universal Mounting Brackets / Hardware Kit -ordered separately • Optional In-Wall Kit -ordered separately (note that speakers can be mounted on-wall with no additional components)		
Price	\$3,000 US MSRP	\$2,000 US MSRP	\$1,250 US MSRP



STUDIO SOUNDBARS

SEAMLESS AUDIO ATTACHED TO THE DISPLAY

Artison LCR Soundbars deliver superb sound without cluttering your décor. The side-firing driver configuration broadens the soundstage to achieve the dimensionality of a true cinema experience.

Ships with standard grill, custom sized grills available

Designed with a slim-profile aluminum enclosure and bracket, Artison Studio Soundbars attach to any flat-panel display, ensuring audio and video remain integrated — even when the system is installed on an articulated arm. Custom grilles are optional and are made to align with the width of your display, not the speakers; allowing for short lead times, consistent sound quality, and displays that can be updated without requiring new speakers.

Studio 39

Studio 46

Studio 55

Studio 65



	Studio 39	Studio 46	Studio 55	Studio 65
Driver Complement	Four - 3.5" Carbon Fiber Midrange/Woofers Three - 25mm Vifa DX Super Audio Tweeters Two - 19mm S tage Tweeters	Six - 3.5"(89mm) Long Throw Carbon Fiber Midrange/Woofers Three - 25mm Vifa DX Super Audio Tweeters Two - 19mm S tage Tweeters	Six - 3.5"(89mm) Long Throw Carbon Fiber Midrange/Woofers Three - 25mm Vifa XT Super Audio Tweeters Two - 19mm S tage Tweeters	Eight - 3.5"(89mm) Long Throw Carbon Fiber Midrange/Woofers Three - 25mm Vifa XT Super Audio Tweeters Two - 19mm S tage Tweeters
Dimensions Without Grille	Height: 4.2" (10.6 cm) Width: 37.4" (95.0 cm) Depth: 2.25" (5.7 cm)	Height: 4.2" (10.6 cm) Width: 44.76" (113.7 cm) Depth: 2.25" (5.7 cm)	Height: 4.2" (10.6 cm) Width: 53.38" (135.6 cm) Depth: 2.25" (5.7 cm)	Height: 4.2" (10.6 cm) Width: 64.8" (164.7 cm) Depth: 2.2" (5.7 cm)
Dimensions With Grille	Height: 4.76" (12.1 cm) Width: Custom Depth: 2.8" (7.0 cm)	Height: 4.76" (12.1 cm) Width: Custom Depth: 2.8" (7.0 cm)	Height: 4.76" (12.1 cm) Width: Custom Depth: 2.8" (7.0 cm)	Height: 4.76" (12.1 cm) Width: Custom Depth: 2.8" (7.0 cm)
Minimum Display Width	38"	45.4"	54.1"	65.5"
Minimum Grille Width	38"	45.4"	54.1"	65.5"
Enclosure	Extruded Aluminum			
Frequency Response	Center: 80 Hz - 40 kHz ± 3 dB Left/Right: 100 Hz - 40 kHz ± 3 dB	80 Hz - 50 kHz ± 3 dB	80 Hz - 20 kHz ± 3 dB	Center: 70 Hz - 50 kHz ± 3 dB Left / Right: 80 Hz - 50 kHz ± 3 dB
Recommended Power	Center: 75 - 150 Watts Left/Right: 50 - 100 Watts	75 - 150 Watts	75 - 150 Watts	75 - 150 Watts
Nominal Impedance	6 Ω	6 Ω	6 Ω	6 Ω
Sensitivity	87 db @ 2.83V, 1 Meter	89 db @ 2.83V, 1 Meter	89 db @ 2.83V, 1 Meter	89 db @ 2.83V, 1 Meter
System Weight	26 lbs	30 lbs	31 lbs	35 lbs
Accessories Available	<ul style="list-style-type: none"> • Wall mounting brackets included. TV Mounting brackets are sold separately • Custom sized grilles in Light Grey or Black are sold separately. 			
Price	\$1,000 US MSRP	\$1,500 US MSRP	\$2,000 US MSRP	\$3,000 US MSRP



HIDDEN BASS

In-wall and small subwoofers disappear yet rock the house

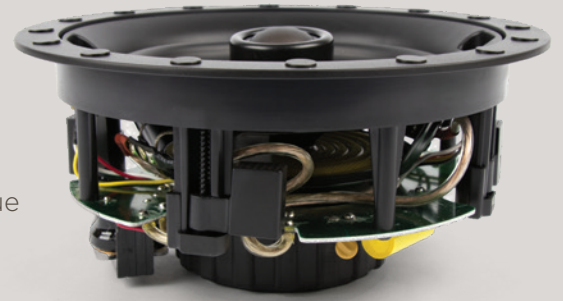
All Artison subwoofers incorporate RCC (Reactance Canceling Configuration), ensuring zero cabinet vibration. Play them anywhere. The Nano can even live on a shelf, without moving an inch.

	Smart Audio WISA Sub	RCC-320 MKII In-Wall Sub	RCC-160 MKII In-Wall Sub		
Key Features	The RCC Nano One is the world's smallest high performance subwoofer. This diminutive powerhouse has the piston area of an oversized 8" woofer.	In-Wall Subwoofers deliver state-of-the-art technology that is designed to be heard and not seen. Easily installed into a standard 2 x 4 stud bay pre or post construction. Special aluminum enclosures make the addition of a powerful yet invisible bass system a onetime simple operation. Custom Long Throw Drivers allow for deep powerful bass from a very small space.			
Color/Grilles	White or Black	Magnetic micro perforated steel grilles are paintable			
Driver Complement	Dual active 6.5" Long Throw Aluminum	Four RCC 4" x 6" Woofers	Two RCC 4" x 6" Woofers		
Dimensions	Including Grilles: 7.5"W x 8"H (including Feet) x 9"D	Retrofit • Cabinet: 13.4"H x 14.2"W x 3.8"D • Grille: 15.0H x 16.0"W x 0.10"D Pre-Construction • Cabinet: 13.46"H x 13.94"W x 3.5"D • Grille: 14.17"H x 3.7"W x 0.10"D	Retrofit • Cabinet: 7.5"H x 13.94"W x 3.5"D • Grille: 8.1"H x 3.7"W x 0.16"D Pre-Construction • Grille: 29.3H x 3.7"W x 0.10"D		
Enclosure	All aluminum extruded	<ul style="list-style-type: none"> • Extruded Black Anodized Aluminum • Adsorptive damping material for a very small enclosure, allowing for more versatile installation applications • IP 65 Rating is among the highest of waterproof ratings • Includes Installation Brackets 			
Configuration	RCC Reactance Configuration (Vibration Free)	RCC - Reactance Canceling Configuration (Vibration Free)			
Amplifier	300 Watt - 900 Watt peak	Designed to work with the RCC1000-SA Amplifier	Designed to work with the RCC1000-SA Amplifier		
Frequency Response	32 Hz - 160 Hz ± 3 dB	30 Hz - 160 Hz ± 3 dB	30 Hz - 160 Hz ± 3 dB		
Impedance	N/A	6.4 Ω	8 Ω		
Low level input	3.5 mm (1/8") Stereo Mini-jack				
High level input	Left / Right Speaker Level				
Voltage	110 - 260 AC Volts, Auto-Sensing Universal Supply				
LPF (Low Pass Filter)	60 - 160 Hz				
LPF Slope	12 or 18 dB/ octave				
Phase Control	0 - 180 Degrees				
Power consumption	Standby: 0.49 W Off none				
Power consumption using Wireless Input	Standby: <3 W Off none				
System Weight	20 lbs/9 kg			22 lbs/10 kg	14 lbs/20 kg
Accessories Available				Pre-Construction brackets included	
Price	\$1,000 US MSRP	\$1100 US MSRP	\$1,500 US MSRP		

ARCHITECTURAL SPEAKERS

WHOLE-HOUSE & SURROUND SPEAKERS

Artison Speakers offer superb options for whole-house entertainment, including Mezzanine surround for wide dispersion into the room. The unique hybrid design combines monopole and dipole technologies, optimizing cinematic performance without compromising musical recordings.



Artison Architectural Speakers feature an ultra-slim, magnetic micro-frame grille (round or optional square) that blends seamlessly into any décor. Available in white and paintable for discrete installation. An ideal solution when paired with Savant's distributed audio solutions.



	Architectural 2-Way Stereo 6.5"	Architectural 2-Way Stereo 8"	Architectural Single Stereo Twin Tweeter 6.5"	Architectural Single Stereo Twin Tweeter 8"	Mezzanine Surround 8
Key Features	<ul style="list-style-type: none"> • Pivoting Tweeter Mount Design for Optimizing Sound-staging • 6" and 8" Long Throw Woven Fiber Woofer with Low Distortion Cone Material • Reliable Installation with Proven Dog Clamp Design • Advanced Crossover Design and High-Quality Components • Adjustable EQ for Tweeter and Woofer • Anti-Diff action Ring 		<ul style="list-style-type: none"> • Ideal for spaces not requiring define Left Right Stereo Soundstage • Reliable Installation with Proven Dog Clamp Design • Advanced Crossover Design and High-Quality Components • Anti-Diff action Ring 		<ul style="list-style-type: none"> • Designed to acoustically blend with Artison front channel solutions using similar high-end drivers. • Tweeters are wired out of phase and the baffle are angled, making them hard to localize • Unique hybrid acoustic design is a Monopole/Dipole mix, allowing for sound "steering" without changing the natural ambiance of a musical recording
Sold As	Pair	Pair	Single	Single	Pair
Grille	Micro-Perforated Steel, paintable White, magnetic.				
Driver Complement	1" Teteron® Tweeter Diaphragm with Low Resonance and Internal Damping	1" Teteron® Tweeter Diaphragm with Low Resonance and Internal Damping	Twin 3/4" Teteron® Tweeter Diaphragm with Low Resonance and Internal Damping	Twin 3/4" Teteron® Tweeter Diaphragm with Low Resonance and Internal Damping	Two - 3.5" (89mm) Polypropylene Midrange/Woofers Two - 25mm Silk Dome Tweeters
Cut Out	7-1/4" diameter x 3-9/16" deep	8-5/8" diameter x 4" deep	7-1/4" diameter x 3-9/16" deep	8-5/8" diameter x 4" deep	7.5" diameter
Dimensions	8-7/16" diameter	9-7/8" diameter	8-7/16" diameter	9-7/8" diameter	9.1"w x 3.5"d
Frequency Response	45Hz - 20kHz +/- 3dB	40Hz - 20kHz +/- 3dB	45Hz - 20kHz +/- 3dB	40Hz - 20kHz +/- 3dB	80Hz - 20 kHz ± 3 dB
Recommended Power	60 - 120 Watts	60 - 120 Watts	60 - 120 Watts	60 - 120 Watts	50 - 150 Watts
Nominal Impedance	8 Ω	8 Ω	8 Ω	8 Ω	6 Ω
Sensitivity	87dB @ 2.83V, 1 Meter	89dB @ 2.83V, 1 Meter	87dB @ 2.83V, 1 Meter	89dB @ 2.83V, 1 Meter	87 dB @ 2.83V, 1 Meter
Weight	4 lbs	4 lbs	6 lbs	6 lbs	5.5 lbs
Accessories Available	<ul style="list-style-type: none"> • Optional Square Grilles • Optional Pro-Construction Brackets 				
Price	\$500 US MSRP	\$600 US MSRP	\$275 US MSRP	\$330 US MSRP	\$ 750 US MSRP

ARCHITECTURAL SPEAKERS

Sold as a system, the Savant Nano Architectural Series consists of the Nano Architectural speaker and RCC160 subwoofer. When combined, this system is capable of creating a rich, well saturated, and evenly distributed sonic experience

Best of all, the Savant Nano Architectural Series compliments modern small-aperture LED lighting technology. Seamlessly blending into any contemporary decor



	MRS-4-R	MRS-4-S	RCC-160 MKII In-Wall Sub
Key Features	<ul style="list-style-type: none"> Balanced Mode Radiator audio technology allows for big sound with far lower power requirements than traditional speakers. Exclusive magnet and spring clip design ensure the speakers stay secure in the ceiling, yet can be removed easily without needing to unscrew anything. The trim mounting ring makes them a perfect fit for both new construction and retrofit projects. Exclusive magnet and spring clip design ensure the speakers stay secure in the ceiling, yet can be removed easily without needing to unscrew anything. The trim mounting ring makes them a perfect fit for both new construction and retrofit projects. Full range Speaker 		<ul style="list-style-type: none"> Extruded Black Anodized Aluminum Adsorptive damping material for a very small enclosure, allowing for more versatile installation applications IP 65 Rating is among the highest of waterproof ratings Includes Installation Brackets <p>RCC - Reactance Canceling Configuration (Vibration Free)</p>
Sold As	Pair		Pair
Grille	Micro-Perforated Steel, paintable White, magnetic.		
Driver Complement	3" BMR (Balance Mode Radiator). Flat Paper Laminated Honeycomb Diaphragm with water resistant coating Rubber surround Die-cast Aluminum frame Neodymium Magnet		Designed to work with the RCC1000-SA Amplifier Two RCC 4" x 6" Woofers
Dimensions	4.05 x 5.23		See above
Frequency Response	80Hz - 20kHz +/- 3dB		30 Hz - 160 Hz ± 3 dB
Recommended Power	35 Watts		RCC1000-SA Amplifier required
Nominal Impedance	4 Ω		8 Ω
Sensitivity	89dB SPL @ 2.83V, 1 Meter		
Weight	1.4 lbs		14 lbs/20 kg
Accessories Available	<ul style="list-style-type: none"> Recommended Subwoofer: Nano or RCC 		Pre-Construction brackets included
Price	\$500 US MSRP		\$1,500 US MSRP

SOUND SURFACE SPEAKERS

INVISIBLE AUDIO

Designed to be hidden behind a wall, these powerful speakers utilize bending mode radiator technology to create an even polar response and clear high frequency — inconspicuously.

Artison Sound Surface speakers install inside the wall and are plastered over to become completely hidden. A fully closed back isolates the sound from other spaces. The single-piece body simplifies installation for both pre-construction and retrofit configurations.



	Surface 80	Surface 40
Sold As	Single	
Color	• Invisible in-wall • Black	
Construction	Aluminum honeycomb core, doped paper skin, composite acoustic panel. Acoustically tuned engineered aluminum enclosure	
Dimensions	Height: 23" (581 mm) Width: 9.75" (245 mm) Depth: 3.5" (79 mm)	
Cut out size	9-3/4" x 16-5/8" (W x H)	
Dispersion Angle	180 degrees x 180 degrees (H x V) Full Spectrum within 2dB	
Nominal Impedance	8 Ω	
Frequency Response	60Hz - 20 kHz \pm 3 dB	80Hz - 20 kHz \pm 3 dB
Recommended Power	80 W Maximum (overload protection built-in)	40 W Maximum (overload protection built-in)
Sensitivity	87 dB @ 1 m, 1W (with 2 mm plaster skim)	86 dB @ 1 m, 1W (with 2 mm plaster skim)
System Weight	9.6 lbs	7.2 lbs
Accessories Available	Pre-Construction Bracket, Surface Installation Handle	
Price	\$1,550 US MSRP	\$750 US MSRP

FOR MORE INFORMATION
VISIT [SAVANT.COM/SPEAKERS](https://www.savant.com/speakers)

SAVANT | ARTISON

savant.com

© 2021 Savant Systems, Inc. All rights reserved.