

airlive®

AirCAM Surveillance Solution

Overview

issue:1007



Table of content

- About AirLive
- AirLive Innovations
- AirLive AirCAM, Enterprise and SMB Surveillance Solution
- AirCAM NVR (ANVR)
- AirCAM ECO PoE Camera
- AirCAM Smart AI PoE camera
- Software - APP



AirLive AirCAM, Enterprise Surveillance Solution

AirLive Technology Corporation

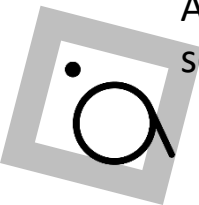
Professional Network Solution Provider

At AirLive, we stand as a distinguished network brand and solution supplier headquartered in Taiwan, bringing over 25 years expertise in IT networking and communication field. Our commitment revolves around delivering not just individual network devices, but comprehensive solutions that drive excellence.

Our unwavering focus is providing solutions that transcend the ordinary, setting new benchmarks in the network industry. Our innovative offering includes

- Unleash seamless wireless connectivity AirCloud
- FTTX GPON/XG(S) PON
- Network Commercial & Industrial Switches
- Smart AI Surveillance Security

AirLive keep developing innovative network products and solutions for serving either commercial or industrial applications.





Wired Connectivity Network Switches

1G | 2.5G | 10G | 40G | 100G

Unmanaged | Web Smart | Layer 3



Telecom 10G PON OLT EMS Cloud

2.5G | 10G

OLT EMS Cloud



AirCloud Wireless Central Management

AX54 | AX30 | AX18 | AC12

Ceiling | InWall | Outdoor



AirCAM AI Enterprise Surveillance

Vandal Dome | IP66 Bullet | PTZ

ECO | Smart AI



AirCAM – AI Enterprise Surveillance Solution

AirLive had been involved in providing Surveillance Security solution on 2007; Over the years, we have continuously valued technical advancement and are pleased to relaunch series of advanced Surveillance Security solutions, based on NDAA compliant for security, thank to the invitation from our partners.

AirLive's AirCAM product line are equipped with Taiwan and SONY Sensor technology NDAA compliant that is committed to deliver top security at high Quality, Reliable, High-Image, Fast Recording/playback, User-friendly, and AI-powered Smart detection features. For Resident and Business clients, no matter indoor or outdoor Security Surveillance Monitoring and management, the AirCAM family provides perfect solution.

- NDAA Compliant
- Equipped with Taiwan SoC CPU/VPU
- Japan SONY CMOS Major CPU/VPU
- NVR – Linux based, suitable for both mobile and PC
- AirCAM IPCAM – ECO and Smart AI in option
- AirCAM64 PC-Based VMS, free license
- APP Available
- Comprehensive network solutions such as AirLive PoE switches and AirCloud Wireless in your option



NEW!

Innovations for - Resident • SMB • Enterprises • Hotel • Campus • ISP & WISP • Industries

Network Video Recorder

- 4~64 Channels Live View
- 1~8 HDD Support
- H.265+
- Audio input support
- Support iOS/Android APP
- Dual Monitor support
- Smart AI Support (8~64CH)



ANVR – Network Video Recorder, Linux Based



- 4~64CH
- H.265+
- Smart AI Human/Vehicle
- Real-time Remote Monitoring
- Dual Monitor
- Smart & Efficient Search



ANVR Model	ANVR-4	ANVR-8	ANVR-16	ANVR-32-4S	ANVR-32-8S
Channel	4CH	8CH	16CH	32CH	32CH
Recording Resolutions	25/30fps @ 4K/5MP/4MP/3MP/1080p/960p/720p/D1/2CIF/CIF			25/30fps @ 12MP / 8MP / 6MP / 5MP / 4MP / 3MP / 1080p /960p /720p /D1 / 2CIF / CIF	
Simultaneous Playback	4CH	8CH	16CH	16CH	16CH
IPC Audio Input	4CH	8CH	16CH	32CH	32CH
Output (dual monitor capable)	1x 4K HDMI, 1x VGA			2x 4K HDMI, 1x VGA	
SATA slots	1	1	2	4	8
Max. HDD	8TB/HDD	8TB/HDD	8TB/HDD	10TB/HDD	12TB/HDD
Network RJ-45	1x 10M/100M		2x 10M/100M/1000M		
Smart AI	Vehicle/Human Detection with supported camera		Smart VCA AI functions, work with AirCAM Smart AI IPCAM		
Alarm In/Out	-	-	-	16-ch In / 4-ch Out	
Encryption & ONVIF	H.265+ / H.265 / H.264 compliant; ONVIF profile s/g Compliant				
APP	ANVR APP iOS/Android Support				
Max. Bandwidth	64Mbps	64Mbps	160Mbps	384Mbps	384Mbps
Smart Intrusion Prevention / Detection /Search	Support	Support	Support	Support	Support

** ANVR 4/8/16/32 for SMB, Retail, Shops. ** 64/128CH ANVR in option, PoE in option

AirCAM Smart AI PTZ PoE Camera, motorized and Zoom



6MP	PTZ	IR D-WDR	H.265+	POE	IP66 Waterproof
Smart AI Human/Vehicle		Motorized	3X 4X Zoom	Smart Focus	

The Most cost-effective PTZ Smart AI Camera !

The AirLive PTZB-630MAI and PTZD-630MAI, support 6MP high resolution with ultra Digital WDR function which delivers dramatically clear image both day and night. With motorized lens and PTZ function, the cameras offer intelligent focus adjustments, making them highly adaptable for various applications.

Smart Focus and PTZ function – PAN, Tilt and Zoom

SI can manually adapt the two camera's pan, tilt, and zoom remotely (via web ui, APP or NVR), to capture different angles and details of a scene. Smart PTZ functions with 4X or 3X optical zoom, serving as excellent security cameras

Smart AI – Human Body and Vehicle Detection

Built-in smart human body and vehicle detection, AirLive Smart AI cameras are ideal for use in stores, storage areas, and parking lots. Installation and management are user-friendly.

Support AirCam VMS and works with ANVR; Mobile APP available.

Category	Smart AI PTZ	Smart AI PTZ
Ref. photo		
AirLive model no.	PTZB-630MAI	PTZD-630MAI
Type	PTZ Bullet Smart AI	PTZ Dome Smart AI
Max. Resolution	6MP @25fps	6MP @ 25fps
PTZ	PTZ	PTZ
SOC	MTK group	MTK group
CMOS Sensor	1/2,8" SONY	1/2,8" SONY
Lens	2.8-12mm Motorized	2.8-8mm Motorized
Optical Zoom	4X	3X
FOV (D x H x V)	123° x 101.9° x 53.2° ~ 38° x 33.1° x 18.6°	147.8° x 106.6° x 76.8° ~ 64.8° x 51.8° x 38.8°
IR distance	30M IR D-WDR	30M IR D-WDR
IP66 Waterproof	Yes	Yes
IK10 Vandal Dome	n/a	n/a
Built-in PoE	802.3af	802.3af
Built-in SD Slot	n/a	n/a
Built-in DIDO Cable	n/a	n/a
Built-in MIC & Speaker	Yes	Only MIC
Smart AI	Yes	Yes
H.265+, H.265, H.264	Yes	Yes
ONVIF profile S/G Compliant	Yes	Yes
AirLive VMS ANVR	Yes	Yes
Mobile APP	Yes	Yes

AirCAM Smart AI PoE Camera, motorized



6MP	IR D-WDR	H.265+	POE	IP66 Waterproof	DIDO SD-Slot Audio-in
Smart AI Human/Vehicle		Motorized 2.8 – 12mm		4X Zoom	Smart Focus

All-in-one! Powerful! Smart! for various applications



Motorized and Zoom – Smart Focus

The two IP66 waterproof Cameras, BU-640MAI and VD-640MAI, support 6MP high resolution; embedded high Digital WDR for super clear image at night and low-light area, motorized and Auto-focus that can adjust focus instantly when the focal length changes. The two Cameras Audio IN / Micro-SD slot, and DIDO is supported. The two cameras can be flexibly installed at any location.

Smart AI Human / Vehicle Detection

With AI built-in, the two cameras can detect Human body and Vehicle automatically, AirLive Smart AI cameras work as the best virtual security guard for stores/shops, storage area, parking lots.

Support AirCam VMS and works with ANVR, with a user-friendly mobile app, easy installation and management.

Category	Smart AI Bullet	Smart AI Vandal Dome
Ref. photo		
AirLive model no.	BU-640MAI	VD-640MAI
Type	Bullet Smart AI	Dome Smart AI
Max. Resolution	6MP @ 25fps	6MP @ 25fps
SOC	MTK group	MTK group
CMOS Sensor	1/2,8" SONY	1/2,8" SONY
Lens	2.8-12mm Motorized	2.8-12mm Motorized
Optical Zoom	4X Optical Zoom	4X Optical Zoom
FOV (D x H x V)	123° x 101.9° x 53.2° ~ 38° x 33.1° x 18.6°	
IR distance	40M IR D-WDR	40M IR D-WDR
IP66 Waterproof	Yes	Yes
IK10 Vandal Dome	n/a	Yes
Built-in PoE	802.3af	802.3af
Built-in SD Slot	Yes	Yes
Built-in DIDO Cable	Yes	Yes
Built-in MIC	Yes	Yes
Smart AI	Yes	Yes
H.265+, H.265, H.264	Yes	Yes
ONVIF profile S/G Compliant	Yes	Yes
AirLive VMS ANVR	Yes	Yes
Mobile APP	Yes	Yes

2MP	IR D-WRD	H.265+	POE	IP66 Waterproof
Motorized 2.8-12mm	4X Zoom	Smart Focus	Vandal Dome	

Auto Adjust Focus Instantly

Motorized and Zoom

The two ECO Motorized 2MP waterproof AirCAM, BU-240M and VD-240M, are equipped with 2.8 – 12mm motorized lens to contribute most flexibility for various applications.



Smart Focus

With smart focus functionality, these AirCAM cameras can instantly auto adjust focus when changing focal lengths, managing focus becoming so smart and easy.

Embedded ultra-Digital WDR

Enable delivering exceptionally clear images, even in low-light or dark conditions.

Support AirCam VMS and works with ANVR, with a user-friendly mobile app, easy installation and management.

Category	ECO Bullet	ECO Dome
Ref. photo		
AirLive model no.	BU-240M	VD-240M
Type	ECO Bullet	ECO Dome
Max. Resolution	2MP @ 30fps	2MP @ 30fps
SOC	MTK group	MTK group
CMOS Sensor	1/2,8" SONY	1/2,8" SONY
Lens	2.8-12mm Motorized	2.8-12mm Motorized
Optical Zoom	4X Optical Zoom	4X Optical Zoom
FOV (D x H x V)	123° x 101.9° x 53.2° ~ 38° x 33.1° x 18.6°	
IR distance	40M IR D-WDR	40M IR D-WDR
IP66 Waterproof	Yes	Yes
IK10 Vandal Dome	n/a	Yes
Built-in PoE	802.3af	802.3af
Built-in SD Slot	option	option
Built-in DIDO Cable	option	option
Built-in MIC	option	option
Smart AI	n/a	n/a
H.265+, H.265, H.264	Yes	Yes
ONVIF profile S/G Compliant	Yes	Yes
	Yes	Yes
Mobile APP	Yes	Yes

2MP

D-WDR

IR

POE



IP66
Waterproof

View completely with large angle

The two types of 2MP AirCAM ECO Camera supports high resolution with PoE integrated, IR for day and night, HDR High Digital WDR for taking clear image in low-light and dark area. To view completely with large angle, the series AirCAM is equipped with 2.8mm Lens which is the closest lens to the human's eye's perspective.

- **High Resolution:** 2MP
- **Optimal Clarity:** 2.8mm fixed lens
- **Enhanced Visibility in dark:** Ultra Digital WDR
- **IP66:** grade Waterproof, metal
- **Small size:** Good for placement tight space

Support AirCam VMS and works with ANVR, with a user-friendly mobile app, easy installation and management

Category	ECO Bullet	ECO Dome
Ref. photo		
AirLive model no.	BU-225S	MD-215
Type	ECO Bullet	ECO Mini Dome
Max. Resolution	2MP @ 30fps	2MP @ 30fps
SOC	MTK group	MTK group
CMOS Sensor	1/2,8" SONY	1/2,8" SONY
Lens	2.8mm Fixed	2.8mm Fixed
FOV (H x V x D)	101.34° x 54.46° x 119.72°	
IR distance	25M IR D-WDR	15M IR D-WDR
IP66 Waterproof	Yes	Yes
IK10 Vandal Dome	n/a	n/a
Built-in PoE	802.3af	802.3af
Built-in SD Slot	option	option
Built-in DIDO Cable	option	n/a
Built-in MIC	option	option
Smart AI	n/a	n/a
H.265+, H.265, H.264	Yes	Yes
ONVIF profile S/G Compliant	Yes	Yes
AirLive VMS ANVR	Yes	Yes
Mobile APP	Yes	Yes

High Resolution IP Camera

AirCAM – Enterprise Surveillance

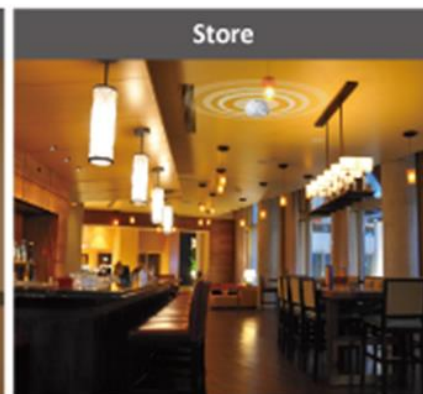
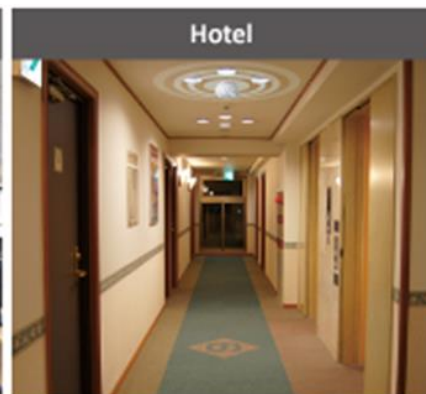
airlive®

AirLive AirCam Surveillance IPCAM

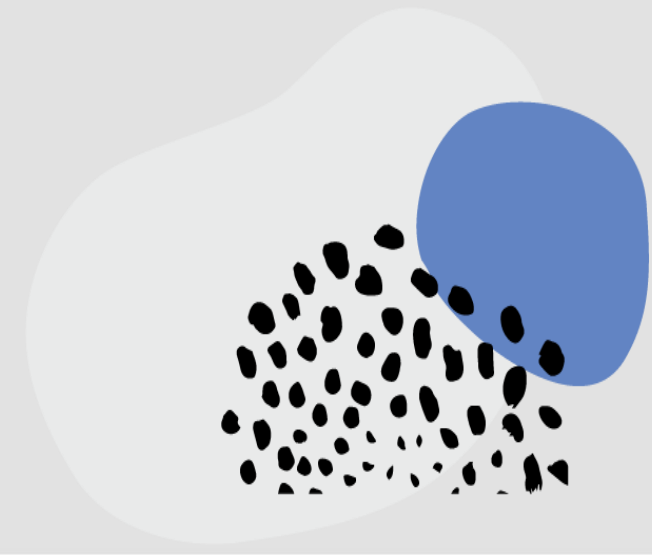
AirCam Smart AI PTZ Series

AirCam ECO Series

							
PTZB-630MAI	PTZD-630MAI	BU-640MAI	VD-640MAI	BU-225S	BU-240M	VD-240M	MD-215
PTZ Bullet Smart AI	PTZ Dome Smart AI	Bullet Smart AI	Dome Smart AI	ECO Bullet	ECO Bullet	Eco Dome	Eco Dome
6MP, IP66, 802.3af PoE	6MP, IP66, 802.3af PoE	6MP, IP66, 802.3af PoE	6MP, IP66, 802.3af PoE	6MP, IP66, 802.3af PoE	6MP, IP66, 802.3af PoE	6MP, IP66, 802.3af PoE	6MP, IP66, 802.3af PoE
PTZ	PTZ	-	-	-	-	-	-
2.8~12mm Motorized	2.8~8mm Motorized	2.8~12mm Motorized	2.8~12mm Motorized	2.8mm Fixed	2.8~12mm Motorized	2.8~12mm Motorized	2.8mm Fixed
4x Optical Zoom	3x Optical Zoom	4x Optical Zoom	4x Optical Zoom	-	4x Optical Zoom	4x Optical Zoom	-
Built-in MIC and Speaker	Built-in MIC	Built-in SD-Slot/DIDO/ Audio in	Built-in SD-Slot/DIDO/ Audio in	-	-	-	-
Smart AI	Smart AI	Smart AI	Smart AI	-	-	-	-



Appendix- Function introduction



H.265+ High Efficiency Video Coding Advance Compression Technology

AirLive CAMERA and NVR are embedded with H.265+ advance compression technology that bringing great benefits

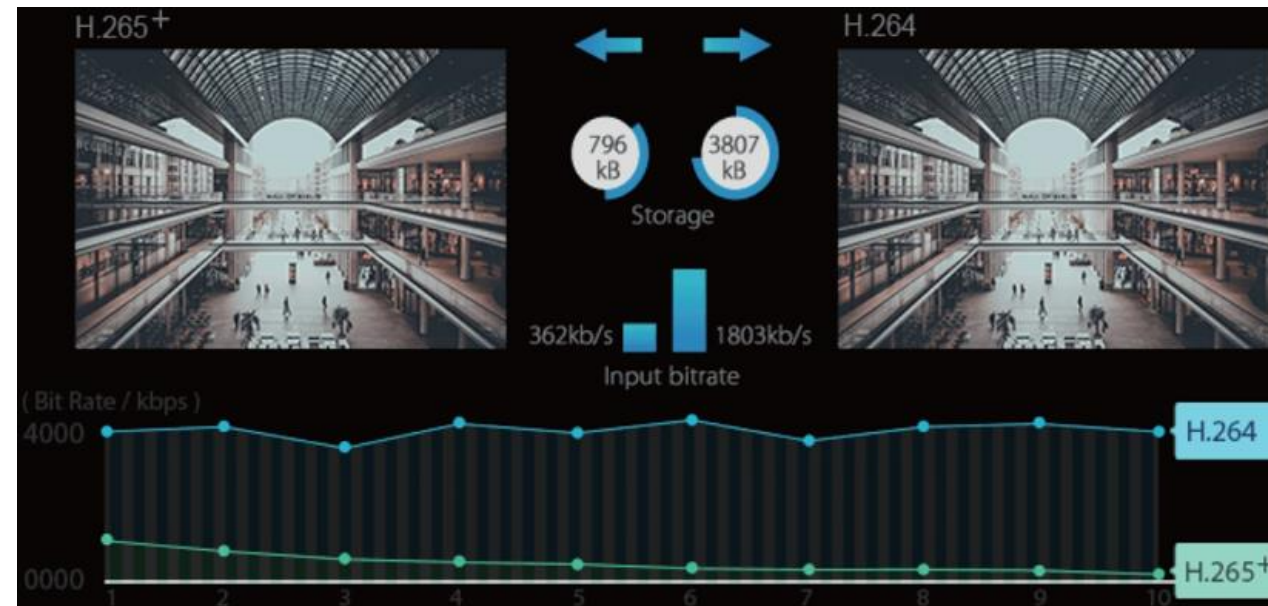
Save Bandwidth about 50%; increase Storage Space about 50%

H.265 High Efficiency Video Coding HEVC, providing advanced compression technology for 4K and 8K

Under the same image quality and bit rate, H.265 theoretically takes up 50% less storage space than H.264.

Video Quality

Under the premise of the same storage space and the same bit rate, H.265 will have 30%~40% higher image quality than H.264



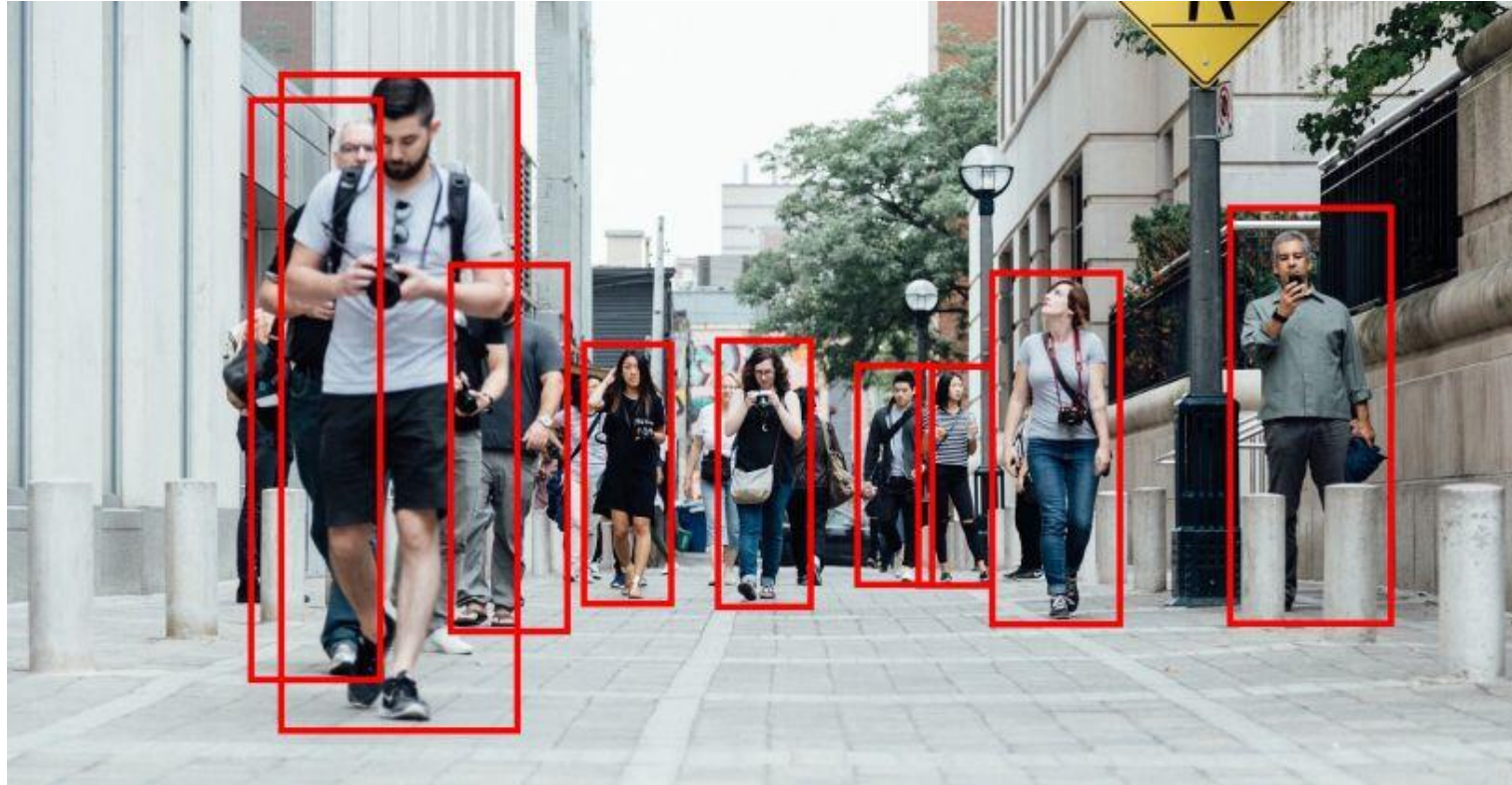
Digital WDR (D-WDR) is a software-based technique that automatically optimizes image quality by adjusting the gamma (γ) value to enhance dark or bright areas. Examples of scenes include entrances, parking lots, and tunnels, where there is a long gap between exterior light and dark interiors. Outdoor scenes with direct sunlight and dark shadows can also cause problems. All AirLive AirCAMs support High DWDR that allow cameras to more accurately reproduce the complete scene.



DIGITAL WDR OFF



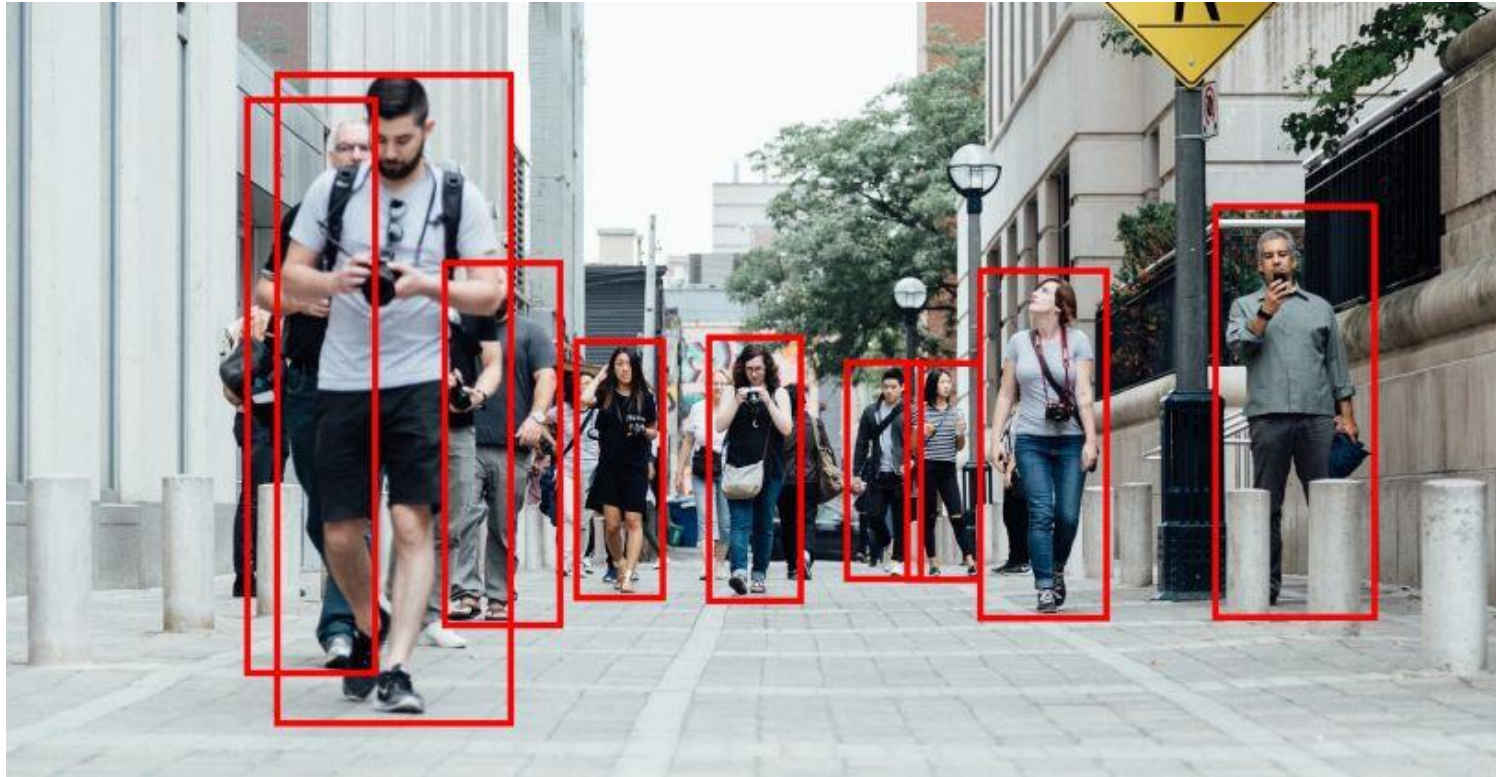
DIGITAL WDR ON



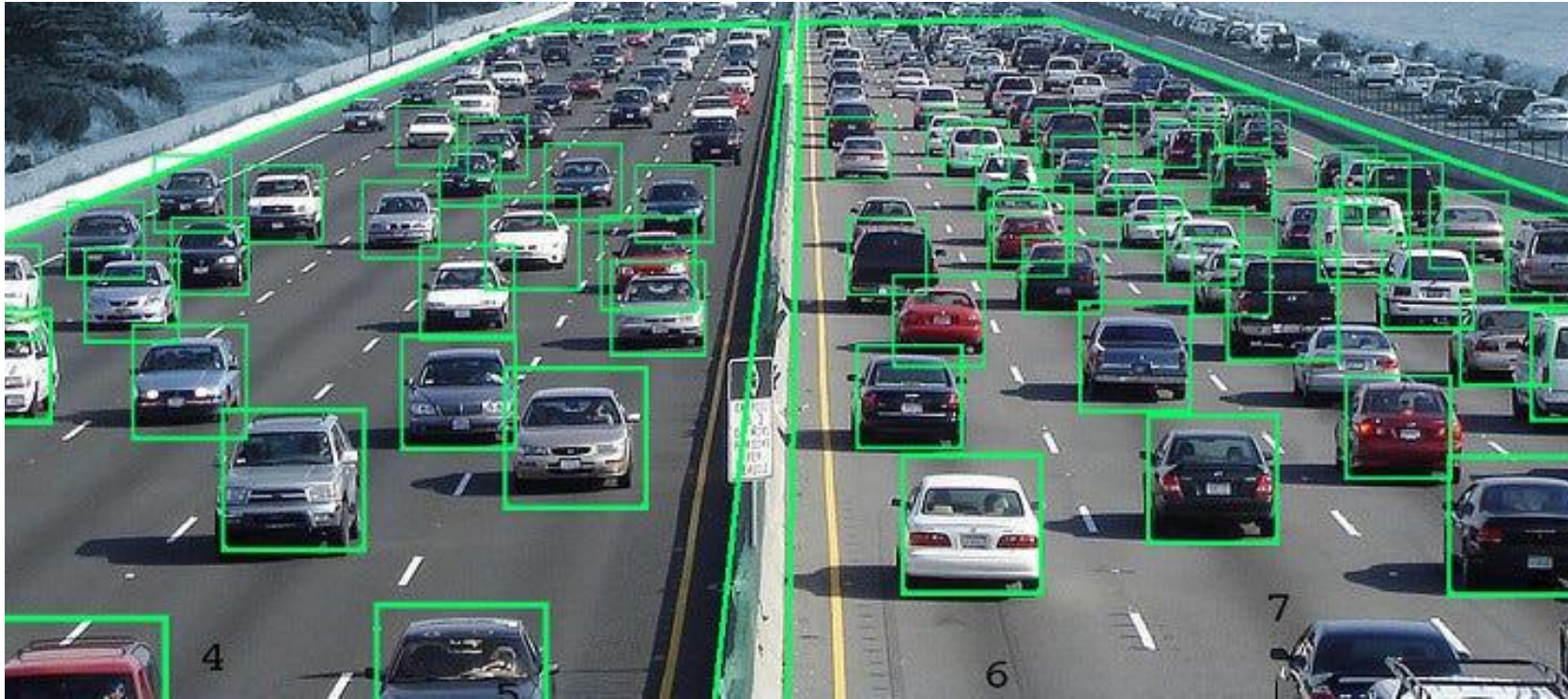
- Smart AI - Human detection technology. It uses advanced artificial intelligence and computer vision to identify and track people in various scenarios, such as security, surveillance, retail, and entertainment. Smart AI aims to provide accurate, reliable, and efficient solutions for human detection needs.
- Only detect **Human**
- No more false alarm



Person Detection AI IP Cam for Virtual Fence Cross line, Restricted area



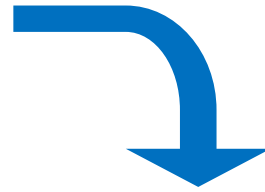
- Camera notify intruder alert
- Only detect **Human**
- No more false alarm



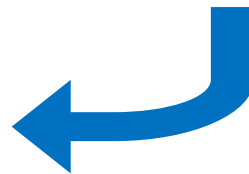
- Smart AI -Vehicle detection technology. It uses advanced artificial intelligence and computer vision to identify and track vehicles in various scenarios, such as traffic management, parking, toll collection, and autonomous driving. Smart AI aims to provide accurate, reliable, and efficient solutions for vehicle detection needs.
- Only detect **Car / Vehicle**

1. Parking Lot Available Spaces Report:

By simultaneously detecting the presence of vehicles/motorcycles in four parking spaces, the system send HTTP messages to the backend. So the backend software can then calculate the remaining parking spaces in the entire parking lot.

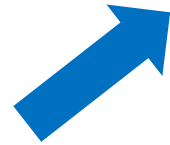


- Camera notify intruder alert
- Only detect **Vehicle**
- No more false alarm



2. Illegal Parking Report:

Monitor the locations prone to illegal parking. If any vehicle/motorcycle detected, camera actions could be such as activating warning lights, capturing screenshots to FTP server (as evidence), sounding an alarm, or sending an HTTP notification to backend stage for personnel dispatched to the scene for handling (e.g., vehicle immobilization)



- Camera notify intruder alert
- Only detect **Vehicle**
- No more false alarm

3.Reserved Parking Space Monitoring:

When the car owner is away, schedule detection can be set up by camera. If any vehicle/motorcycle detected, car owner can be notify by email, camera would activate warning lights, capture screenshots in mSD card or sound an alarm (which can record the car owner's own voice).



- Camera notify intruder alert
- Only detect **Vehicle**
- No more false alarm

Audio alert, DO trigger (external devices), Http notify, TCP notify, Send snapshot to FTP/Email/mSD card



DO



LED alert

Speaker out



Audio alert, voice warning

PoE to IP Cam



With smart focus function, AirLive motorized PoE camera can adjust focus immediately when the focal length is changing.

It is very simple for user to install the camera.

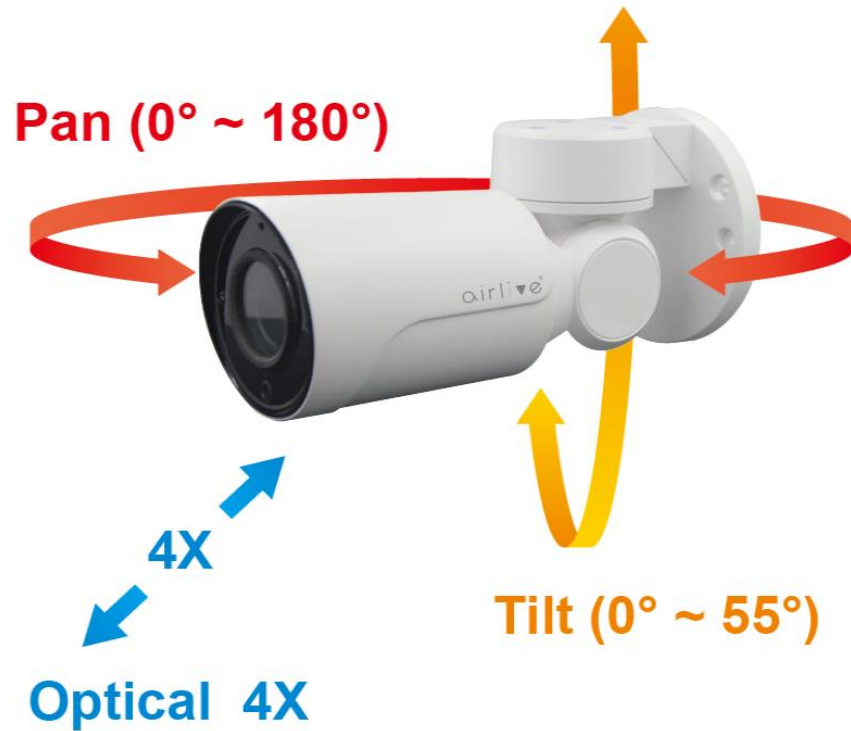
- HD 2.8– 12 mm Auto Focus Motorized lens; 4x Optical Zoom
- HD 2.8-8 mm Auto Focus Motorized lens; 3X optical Zoom



**4X Zoom – enlarge where
you want to clearly
monitor**



original



A smart PTZ camera is a camera that can pan, tilt, and zoom automatically or remotely to capture different angles and details of a scene. Smart PTZ cameras are widely used for streaming, web conferencing, broadcasting, security, and surveillance purposes.

- Pan: 0° ~ 180°; Tilt: 0° ~ 55°
- Manual Control Speed: Pan: 0.5° ~ 20° /s; Tilt: 0.5° ~ 10° /s
- HD 2.8– 12 mm Auto Focus Motorized lens
- 4x Optical Zoom



4X Zoom



original



AirLive Solution

Enterprise Surveillance

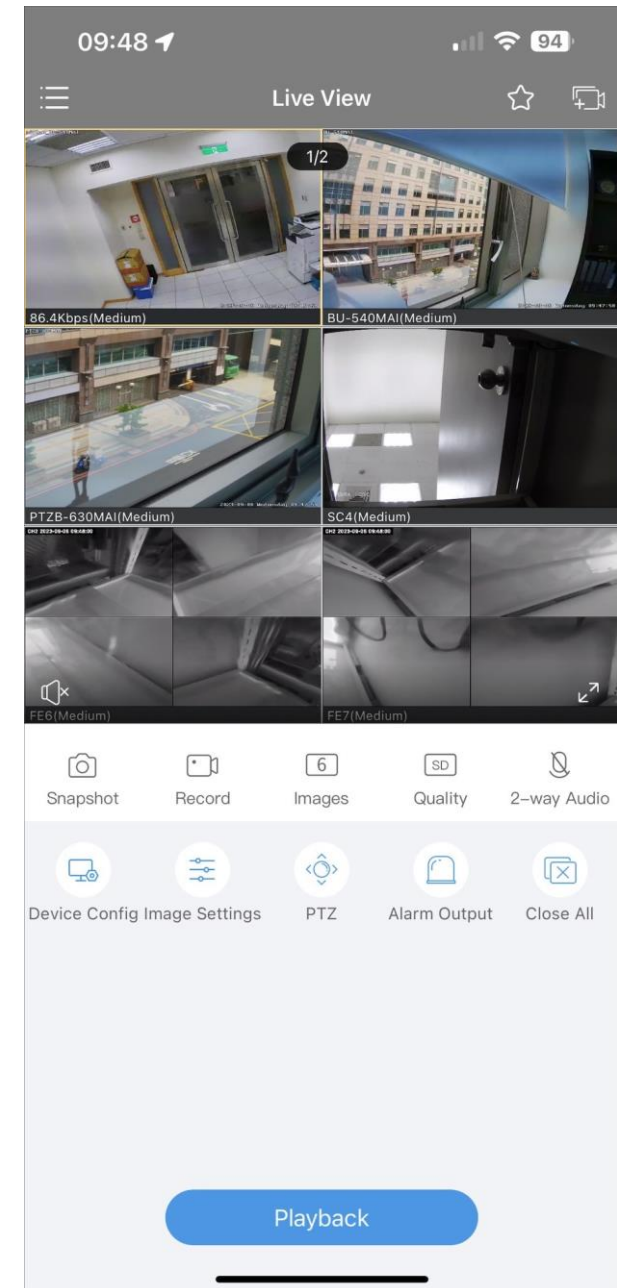
Software



ANVR Guardview App

The ANVR app is an application that allows you to view and manage your network video recorder (NVR) and IP cameras from your mobile device

- real-time monitoring, video playback, and PTZ control of your cameras remotely
- Support various video formats, resolutions, and protocols
- Support Artificial intelligence and analytics to perform tasks such as motion detection, Human detection, Car detection
- Support instant notifications and alerts when your cameras detect any abnormal events or alarms
- Support PTZ function
- Support iOS / Android App

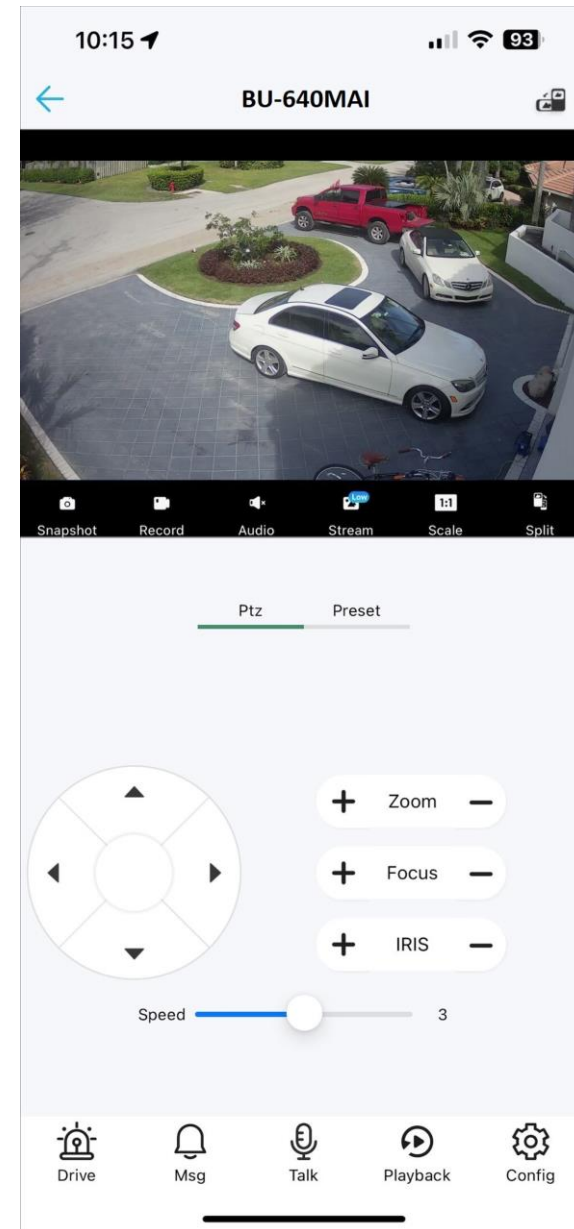
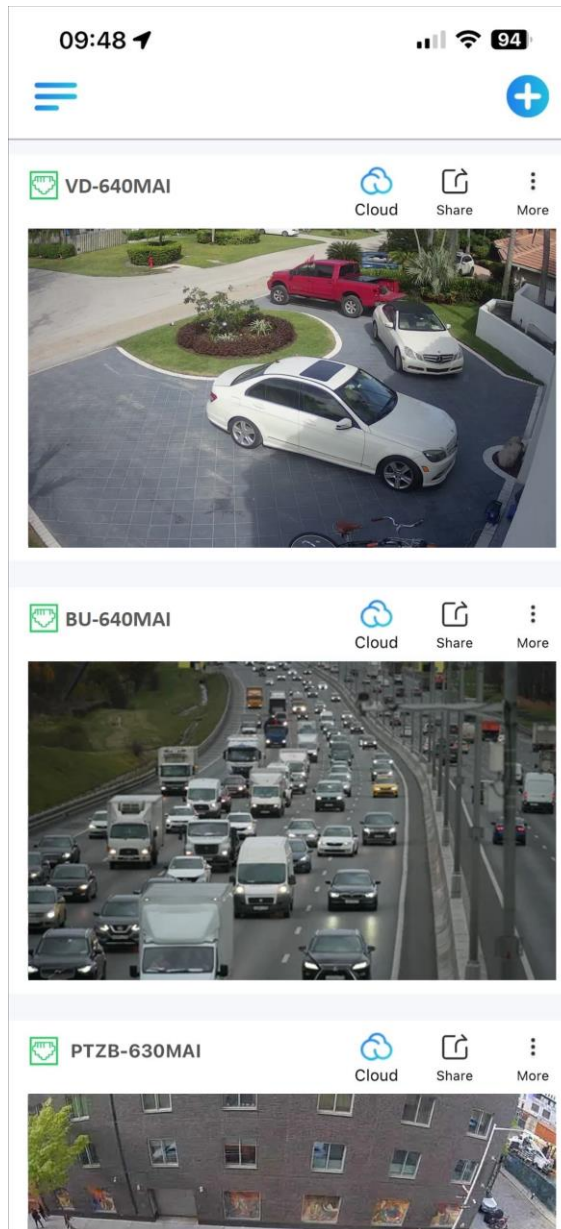




IP Camera Videolink App

The IP camera app is an application that allows you to view IP cameras from your mobile device

- real-time monitoring and PTZ control of your cameras remotely
- support various video formats, resolutions, and protocols
- Support Artificial intelligence and analytics to perform tasks such as motion detection, Human detection, Car detection
- Support instant notifications and alerts when your cameras detect any abnormal events or alarms
- Support PTZ function
- Support iOS/ Android App





IP Search Tool

Use the AirLive IP Search Tool to find all your connected IP camera's easily in the network. Just double click the camera and you can start the configuration.

IP Address	HTTP Port	Model	Title Name	Preview	Firmware Version	AF V...	Status	All subnet ...	SN.	Netmas
<input checked="" type="checkbox"/> 192.168.0.190	80	AirCam-VD-640MAI	VD-640MAI		AirCam-VD-640MAI_AF_V1-A_Y_EN-RTMP+H5_L_V3.2...		Login success	close	EF0000000F15592	255.255
<input checked="" type="checkbox"/> 192.168.0.191	80	AirCam_BU-640MAI	BU-640MAI Ne...		AirCam_BU-640MAI_AF_V1-A_Y_EN_WM1570-RTMP...		Login success	close	EF0000000F15593	255.255
<input checked="" type="checkbox"/> 192.168.0.248	80	AirCam_PTZB-630MAI	PTZB-630MAI		AirCam_PTZB-630MAI_AF_V1-A_Y_EN-RTMP+H5_L_V...		09:52:39 Humandisappear:video Human shape detected ...	close	EF0000000F16721	255.255

IP address setting

DHCP

Start IP: 192 . 168 . 0 . 167

End IP: 192 . 168 . 0 . 169

Netmask: 255 . 255 . 255 . 0

Gateway: 192 . 168 . 0 . 185

DNS1: 8 . 8 . 8 . 8

DNS2: 8 . 8 . 8 . 8

Buttons: Check, Remove All, Remove All, Remove All, OK, Cancel

Batch Reset | Batch Reboot | IP Batch Setting | 50HZ/60HZ | Batch Set Language | Batch Sync Time | Batch Set Password | Batch Set video and audio encode

Upgrade Firmware | C:\Users\Public\Documents | IP Batch Manual Setting | Browse... | Smart detection



Download for Free from the AirLive.com website.



AirCam64 VMS



AirCam64 is Client Software for Windows, When you do not use an NVR but still want to record all your security camera, then use the AirCam64 Software. The software supports up to 64 camera. AirCam64 lets you view and record selected camera as well control PTZ supported cameras.

Download for Free from the AirLive.com website.

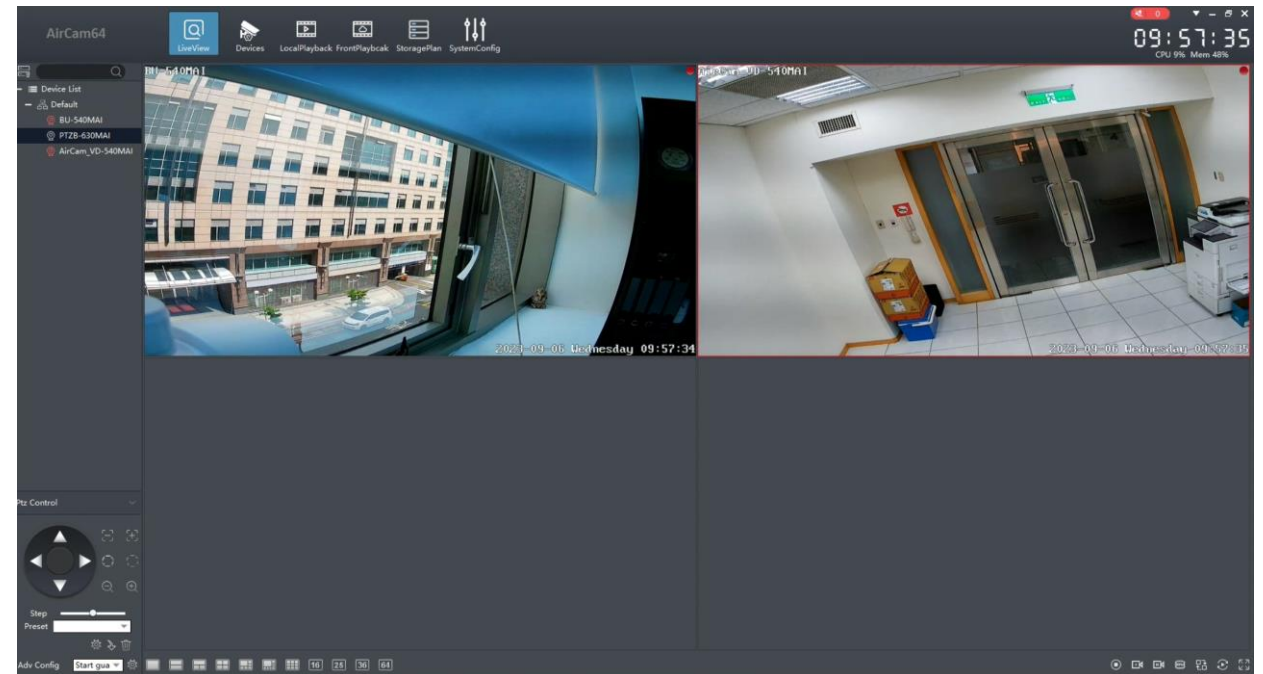
The screenshot displays the AirCam64 VMS interface. At the top, there are navigation icons for LiveView, Devices, LocalPlayback, FrontPlayback, StoragePlan, and SystemConfig. The system status shows CPU 40% and Mem 81% at 10:15:50. Below this is a 'LAN Device List' with 3 devices selected. The list includes columns for IP/Domain, Device Type, Device Model, Firmware, SN, P2P ID, ONVIF Netcom, Title, MAC Address, and Run Time.

IP/Domain	Device Type	Device Model	Firmware	SN	P2P ID	ONVIF Netcom	Title	MAC Address	Run Time
<input checked="" type="checkbox"/> 192.168.0.190	IPC	AirCam-VD-640MAI_V1_AF		EF00000000F15592	/@AJ230807	Disable	VD-640MAI	00:4F:5C:00:01:30	5 Day 17 Hour 41 Min 5 Sec
<input type="checkbox"/> 192.168.0.191	IPC	AirCam_BU-640MAI_V1_AF		EF00000000F15593	/@AJ230807	Disable	BU-640MAI New FW	00:4F:5C:00:01:25	3 Day 23 Hour 17 Min 29 Sec
<input type="checkbox"/> 192.168.0.248	IPC	AirCam_PTZB-630MAI_V1_AF	AF	EF00000000F16721	/@AJ230807	Disable	PTZB-630MAI	00:4F:5C:00:01:70	5 Day 19 Hour 58 Min 58 Sec

Below the device list is a 'Device added List' with 0 devices selected. A 'Ptz Control' panel is visible at the bottom left, featuring a directional pad, zoom controls, and a 'Step' slider. The main live view shows a camera feed of a glass door with an 'EXIT' sign. A context menu is open over the door, listing options like 'All Record Liveview', 'Synchronizing time', 'Remote Configuration', 'Digital Zoom', and 'FaceDetection'. The bottom right corner of the live view shows the date and time: '2023-11-06 Monday 10:31:57'. The system status at the bottom right shows CPU 37% and Mem 85% at 10:32:00.

IP camera VMS is software that manages IP cameras and records video. It can support various features, such as remote access, analytics, alerts, and scalability

- 64 IP camera Live stream
- Support 1/2/3/4/6/8/9/16/25/36 split Live View
- Support local play back/front play back
- Support Storage plan
- Support PTZ function
- Support Artificial intelligence and analytics to perform tasks such as motion detection, Human detection, Car detection
- Windows 7/10/11 Support



NETWORK VIDEO
WIRLESS
ENVIRONMENT
WORLDWIDE
SAFETY
GLOBAL
IMPROVEMENT
SMART
FOCUS
WIRLESS
OUTDOOR
INTELLIGENT
WORLDWIDE
EASE OF USE

Thank you!

CONVERGENCE
CAMERA
SAFETY
IMPROVEMENT
NETWORK VIDEO
WORLDWIDE
CAMERA
WORLDWIDE
FOCUS
GLOBAL
OUTDOOR
SAFETY
WORLDWIDE
NETWORK VIDEO
IMPROVEMENT
INTEGRATION
OUTDOOR
PROFESSIONAL
EASE OF USE
GLOBAL
WIRLESS
OUTDOOR
EASE OF USE

airlive

www.airlive.com

ISO9001